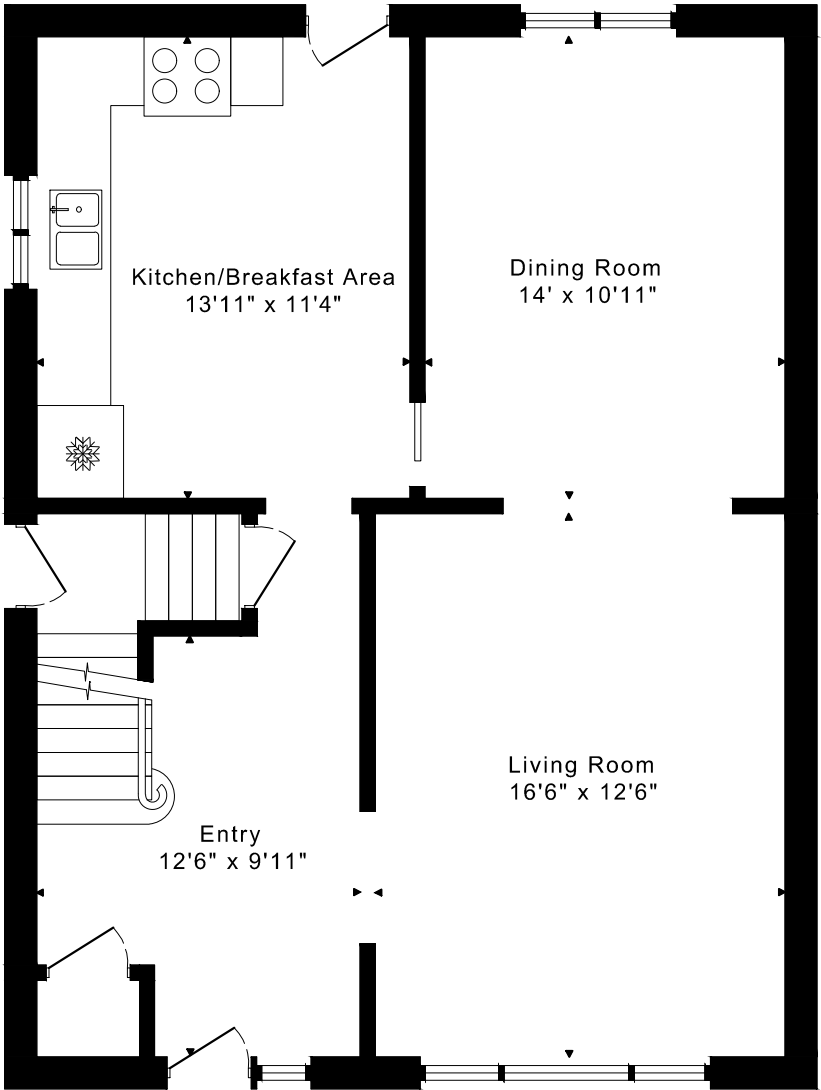
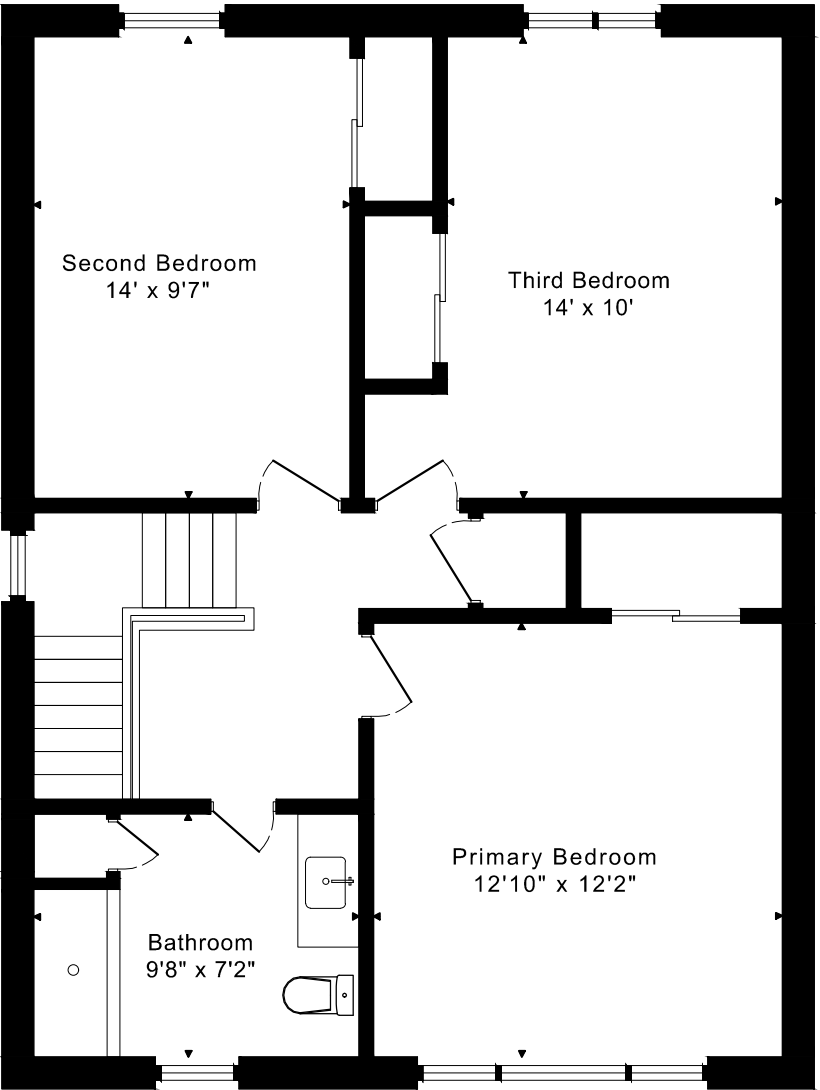


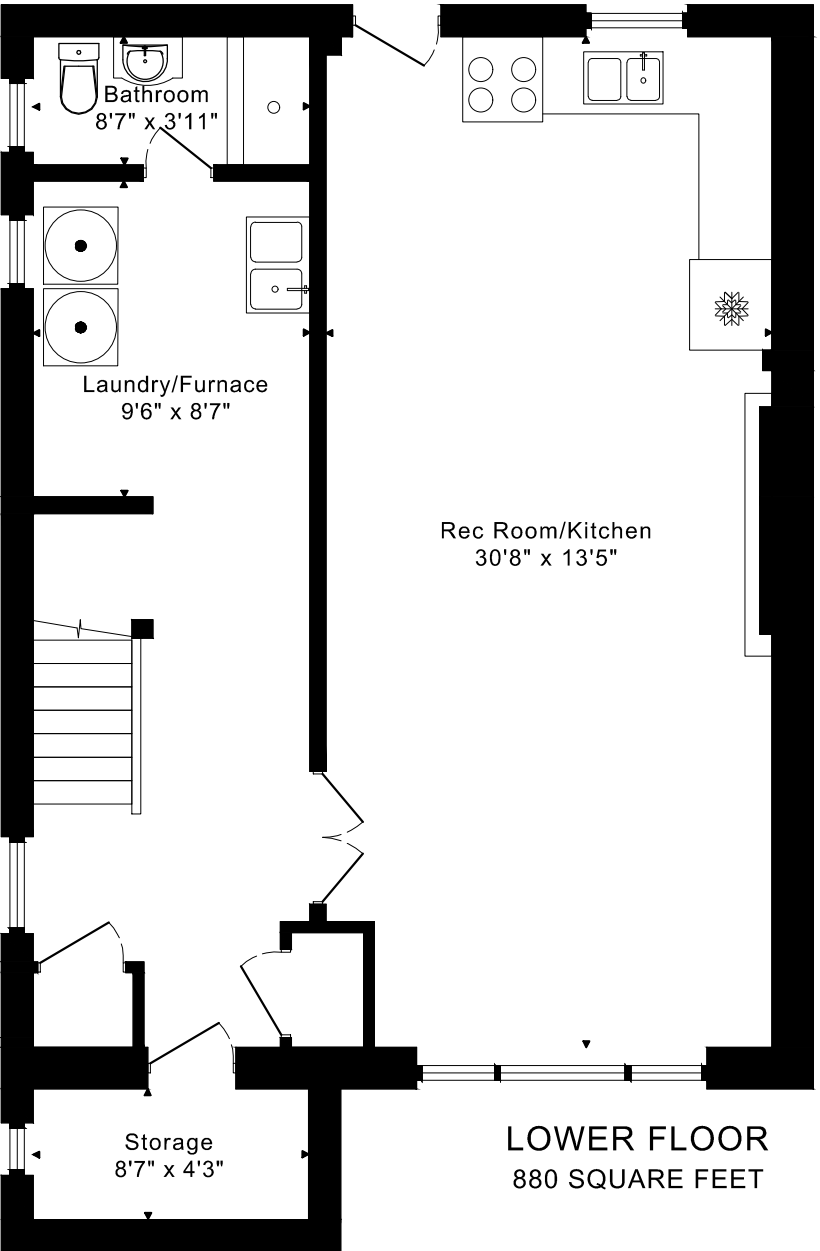
81 POWELL ROAD FLOOR PLANS



MAIN FLOOR
830 SQUARE FEET



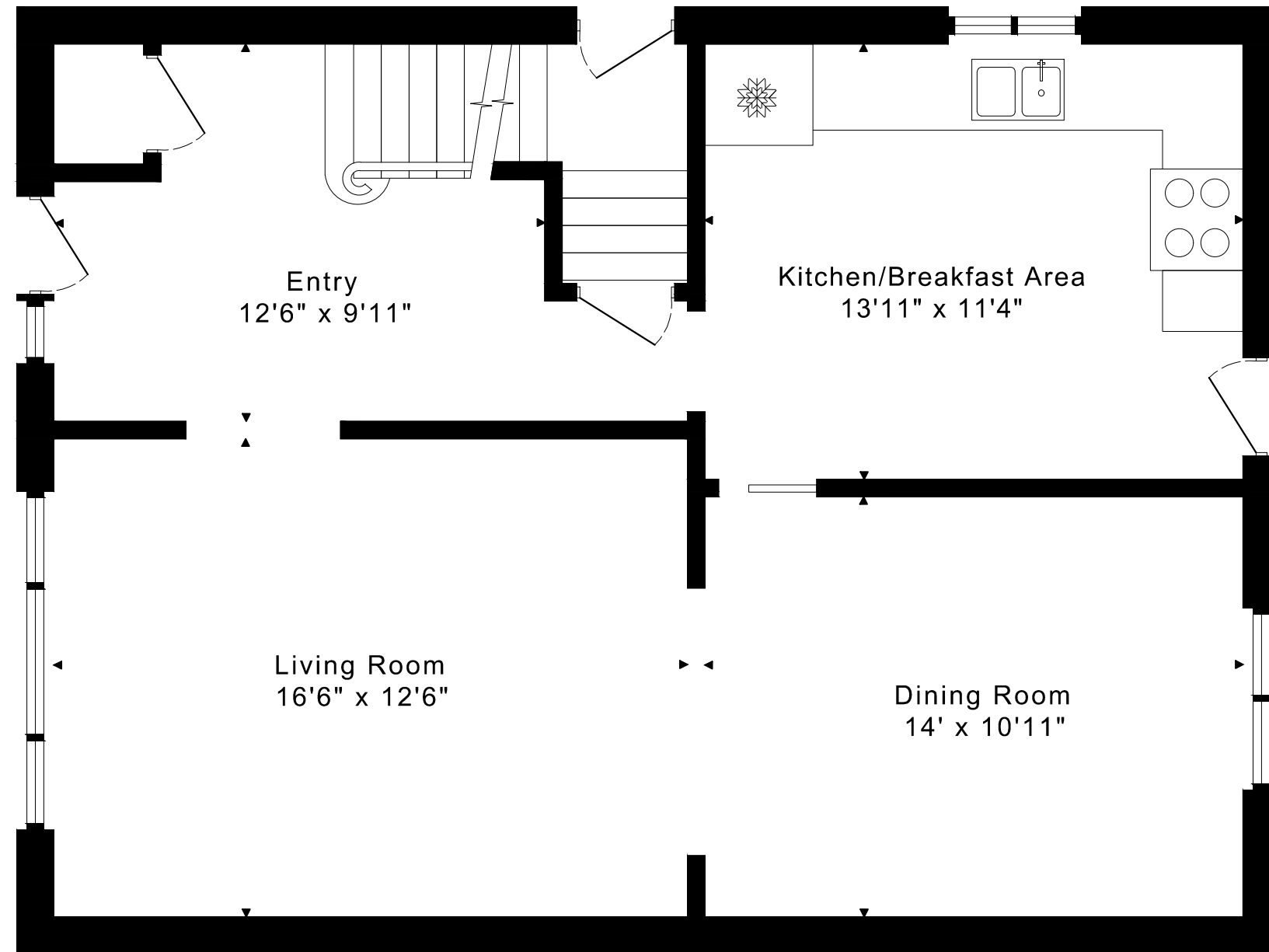
SECOND FLOOR
830 SQUARE FEET



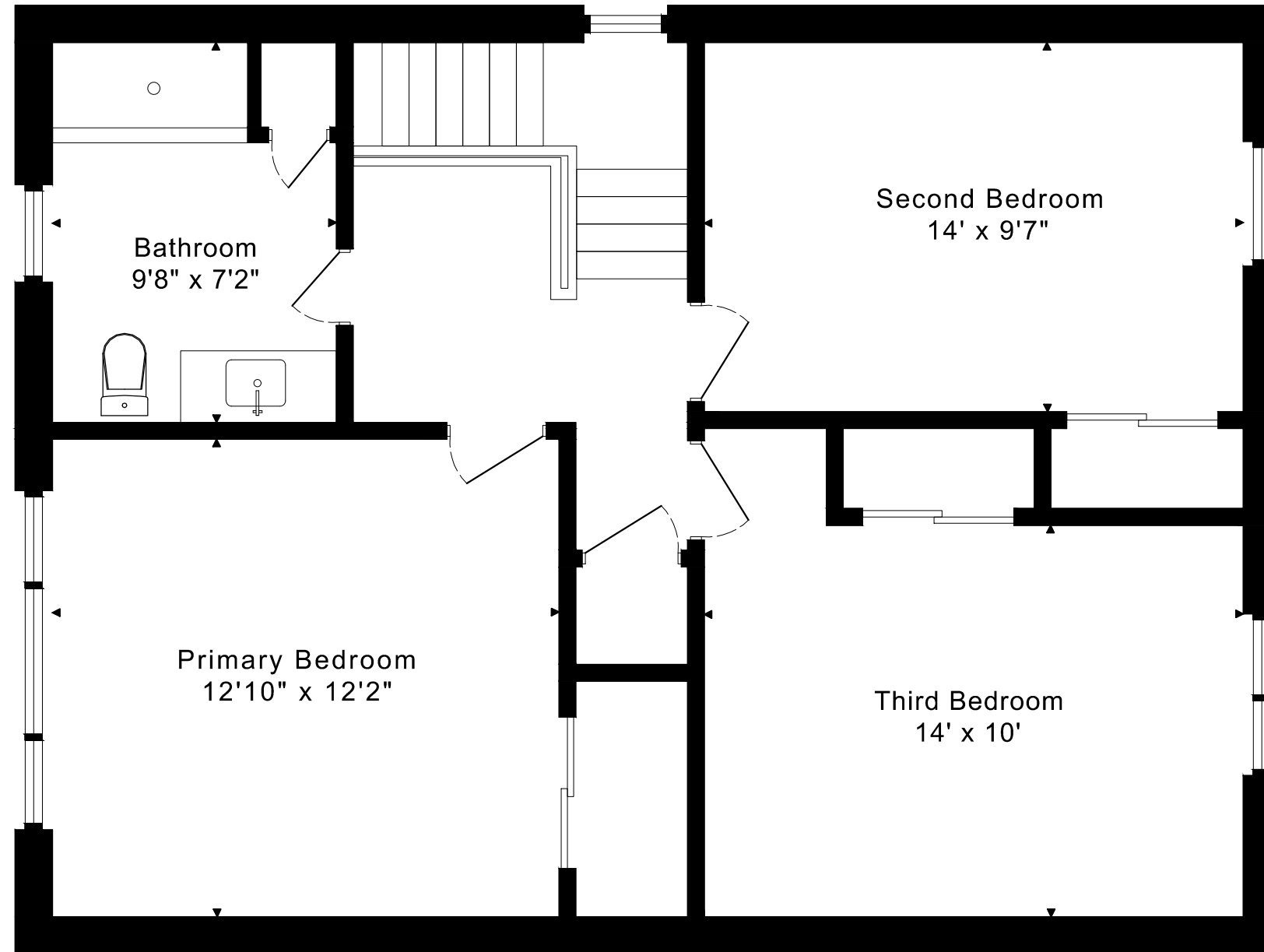
LOWER FLOOR
880 SQUARE FEET

1660 sq ft + 880 sq ft
BELOW GRADE

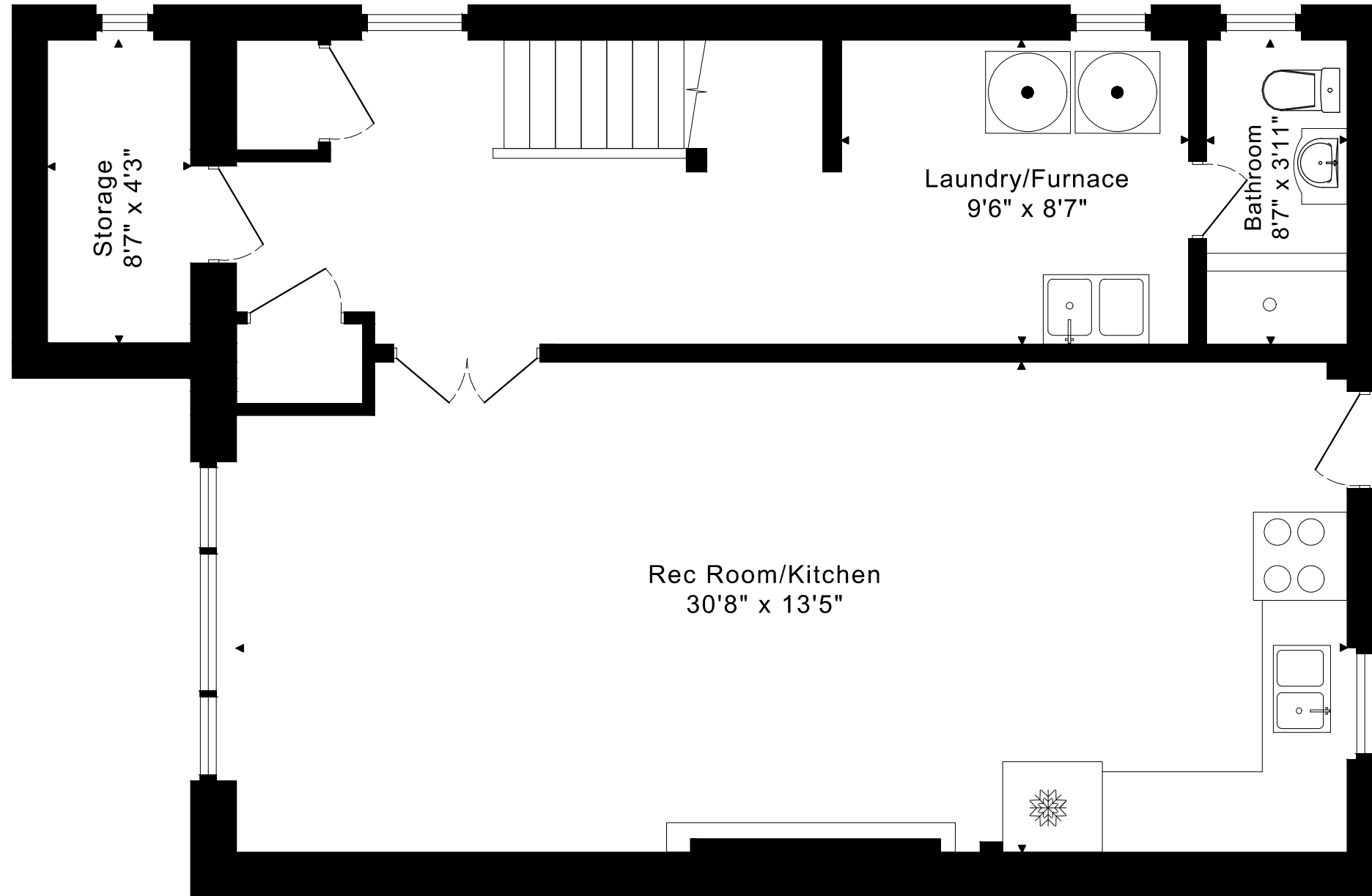
81 POWELL ROAD
FLOOR PLANS
MAIN FLOOR 830 SQUARE FEET



81 POWELL ROAD
FLOOR PLANS
SECOND FLOOR 830 SQUARE FEET



81 POWELL ROAD
FLOOR PLANS
LOWER FLOOR 880 SQUARE FEET



81 POWELL ROAD ROOM MEASUREMENTS

Floor	Room	Imperial				Metric [m]	
		Length		Width		Length	Width
		Feet	Inches	Feet	Inches		
Second	Primary Bedroom	12	10	12	2	3,91	3,71
	Second Bedroom	14	0	9	7	4,27	2,92
	Third Bedroom	14	0	10	0	4,27	3,05
	Bathroom	9	8	7	2	2,95	2,18
Main	Entry	12	6	9	11	3,81	3,02
	Living Room	16	6	12	6	5,03	3,81
	Dining Room	14	0	10	11	4,27	3,33
	Kitchen/Breakfast Area	13	11	11	4	4,24	3,45
Lower	Rec Room/Kitchen	30	8	13	5	9,35	4,09
	Laundry/Furnace	9	6	8	7	2,90	2,62
	Bathroom	8	7	3	11	2,62	1,19
	Storage	8	7	4	3	2,62	1,30

CAPTURED ON: 18 JAN 2024
 DIMENSIONS ARE APPROXIMATE AND SHOULD BE CONSIDERED
 ILLUSTRATIVE ONLY.

1660 sq ft + 880 sq ft
 BELOW GRADE

The following is a disclaimer regarding the approximate nature of dimensions and floor areas listed in this document:

Disclaimer:

The dimensions and floor areas listed in this document are provided as an estimate only and are intended to be used for illustration purposes only. These measurements are not necessarily meant to be a perfect representation of the actual space.

Notes regarding measurement methods and accuracy:

The utilization of laser measurement technology during the 3D model capturing process at the location provides an accurate representation of floor plans, with a typical margin of error of 3-5%. For the most accurate and official measurement data, it is advised to consult official documents such as MPAC records, builder's pre-construction plans, or data from certified measurement companies.

Exterior wall thickness is included in the calculation of the overall square footage and is considered as a component of the footprint. The wall thickness measurement is obtained onsite whenever possible, or estimated in the event where obtaining onsite measurements is not possible, such as in the case of condominium buildings where wall thickness may vary throughout the building.